

EOL

Welcome

EOL (End Of Line) version 3.3 converts English language text files among Windows, Mac and Unix (Linux) formats. It detects the format of each text file automatically.

Before using EOL, please read the [warning](#) about binary files in the General topic.

EOL is Copyright © 2005, 2006, 2009, 2013, 2017, 2018 by Ron Charlton. EOL may be distributed per its freeware [license](#).

EOL requires Microsoft's free .NET Framework version 4.0. Your computer may already have it. If not, EOL's setup program will offer to download it from Microsoft.

General

Starting EOL

To start EOL, click Start»Programs»EOL»EOL. This assumes you accepted the default installation setup.

Using EOL

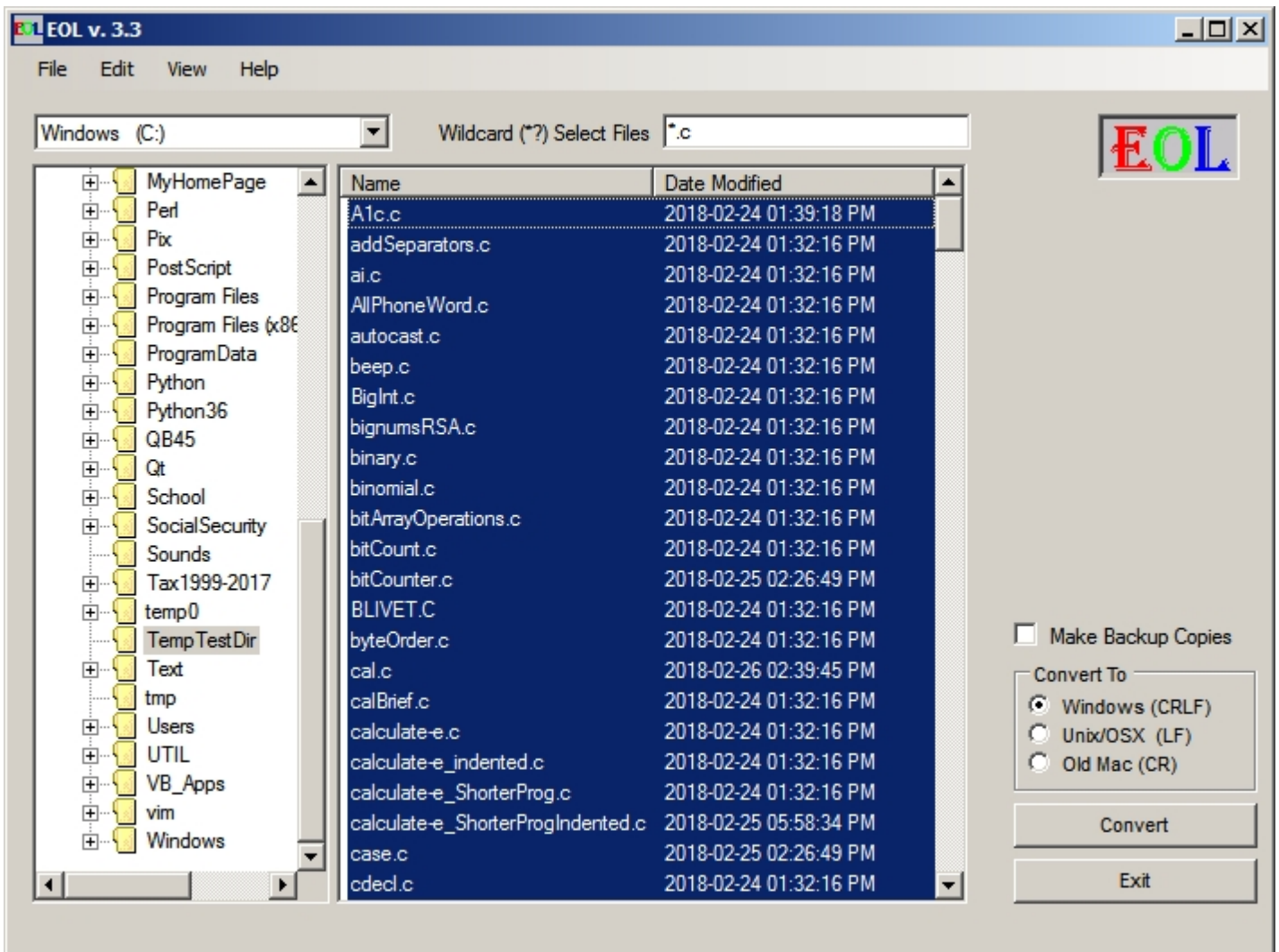


Figure 1

Text File Formats

EOL will convert English Windows (CRLF), Old Mac (CR before OS X 10) and Unix (Linux) (LF) text files to any of the three formats. EOL determines each file's line ending type automatically.

Selecting Files for Conversion

To convert one or more files, select a *Drive* (See Figure 1) where the file(s) reside. Select a *Folder* by clicking a folder name. Files in the selected folder will be displayed to the right of the Folder tree.

Click a file to select it for conversion. You can Ctrl+click (press and hold the *Ctrl* key while clicking a file) to select multiple files. Shift+click will select a range of files.

You can select files using wild cards. The wild card characters are * and ?. * will match any number of (including zero) characters in a file name; ? will match exactly one character. All other characters match themselves, ignoring upper/lower case differences. * and ? may be used more than once. A maximum of eight * may be used. Press the *Enter* key to update the file list. In figure 1, *.txt selected all files ending with .txt. ????.txt will select all three-character file names with txt as the extension.

You can select all files in the list by typing Ctrl+A or selecting menu item **Edit»Select All**.

Binary Files

WARNING: *Do not select files that are binary.* EOL will damage binary files beyond repair. A very limited list of Windows binary files is those that end with .EXE, .DOC, .PDF, .JPG, .MPG, .DLL, .ZIP, as well as many others. *You must not convert binary files with EOL.* A reasonable (but not perfect) guideline is: If you can read (not just open) all of a file with Notepad or other text editor, it is probably not a binary file and can be converted with EOL.

EOL attempts to detect binary files and warn against converting them. EOL can not always detect whether a file is binary or text: Some text files may contain diacritic letters or other characters, such as ©, that will make EOL flag the file as binary. (EOL considers a file having one or more characters with a code of 0 to 7, 14 to 31, or 128 to 255 to be a *binary* file.) Worse, true binary files may not be flagged as such by EOL. Just as you don't drive carelessly because you know you are wearing a seatbelt, you must not select files carelessly and trust EOL to prevent damage.

You must be the final arbiter of whether a file is text or binary. Do not select files that are true binary.

If — in spite of your careful choice of files — a binary file (as defined by EOL) is encountered during conversion, you will be warned that **converting the file could damage it beyond repair**. You will be asked whether to proceed with the file. You must click one of

- Yes
- Yes to All Binary
- No
- No to All Binary
- Cancel

You should click *Yes* or *Yes to All Binary* only if you know the file(s) is truly a text file mistakenly flagged as binary by EOL. Diacritic letters will cause EOL to flag a file as binary. These occur frequently in some non-English language text files. If you answer *Yes to All Binary* or *No to All Binary*, binary files will be converted accordingly, until all selected files have been visited. In any case, non-binary files (i.e., text files) will be processed until all selected files have been visited, unless *Cancel* is clicked. Clicking *Cancel* skips all remaining files. If you are in doubt about a possible binary file, you should cancel the conversion, checkmark *Make Backup Copies*, and then click the *Convert* button again.

Making Backup Copies

The check box labeled *Make Backup Copies* (see Figure 1) determines whether a backup copy of the original file is made. If the check box is checkmarked then a backup file will be made with `.BAKxx` appended to the original name in the same folder, and `x` replaced by a digit 00 through 99. `xx` will be one higher than the largest existing `xx`.

For example, `myfile.txt` will have a backup file named `myfile.txt.BAK01` the first time it is converted with *Make Backup Copies* checkmarked. Next will be `myfile.txt.BAK01`, and so on to `myfile.txt.BAK99`.

The *Make Backup Copies* check box state is saved when you close EOL and it is restored when you start EOL again.

Converting Files

Three radio buttons at the right of the EOL window determine the resulting text file format: Windows, Old Mac or Unix (Linux). Only one radio button can be selected at a time.

After selecting a *Convert To* type, click the *Convert* button to convert the file or files. Double-click a file name to convert the file immediately. Each converted file replaces its original file. A progress indicator updates after every 100 lines. The progress indicator has a *Cancel* button to stop conversion of the current file. The original file will remain unchanged if *Cancel* is clicked, and you will be asked if you want to continue with any remaining selected files. You must answer *Yes* or *No*. Files containing a few hundred or a few thousand lines will typically be converted so fast that you may not see the progress indicator.

If a file to be converted is the same type as the *Convert To* type, it will be skipped.

Menus

EOL has for menus and seven menu items:

- **File**
 - **Convert** - change the end-of-line characters for the selected files
 - **Exit** - closes (ends) EOL
- **Edit**
 - **Select All** - Selects all files in the list
- **View**
 - **Show ToolTips** - shows or hides ToolTips (A ToolTip is a small label that is displayed when the mouse pointer is held over a control for a set length of time, usually containing a description of what the control does.)
 - **Show Warning On Startup** - shows or hides the warning to not convert binary files when EOL starts
- **Help**
 - **Help Contents** - shows EOL help (this help)
 - **About** - Shows EOL's version, author and copyright

Buttons

EOL has four buttons:

- **C**onvert - converts all selected files to the specified text file format
- **E**xit - closes (ends) EOL

Limitations

EOL works on local drives only.

EOL can convert files of 2,147,483,647 or fewer bytes.

If the last line in a file has no line ending (newline), EOL will add one. Typically the last line in a text file has a line ending.

Uninstalling EOL

Be sure to close EOL and its help before uninstalling it so all EOL files can be removed from your computer.

You can uninstall EOL by using **Add or Remove Programs** in the Windows® Control Panel.

License

EOL is copyright ©2005, 2006, 2009, 2013, 2017, 2018 by Ron Charlton. You may freely distribute its unmodified setup files. You shall not distribute EOL or any of its component files by any means other than its provided setup files.

You shall not charge anything other than a nominal media fee for distributing EOL's setup files.

Author

Ron Charlton
9002 Balcor Circle
Knoxville, TN 37923-2301 USA

Phone: 865-776-7345

E-mail: charltoncr@RonCharlton.org

Web Site: <http://RonCharlton.org/>

Credits

- EOL was built with Microsoft Visual Basic 2010 (.NET).
- EOL's help was created with [HelpNDoc](#) (free for personal use).

History

- v3.3 (2018-03-10) - Added Ctrl+A shortcut key combination and a menu item to select all files in the list
- v3.2 (2017-11-02) - Allow sorting of file list columns. Works correctly when system stores temporary files on a drive different from where the target files are stored.
- v3.1 (2017-10-30) - Ported EOL to Visual Basic 2010 (.NET)
- v2.1 (2009-06-06) - Ported EOL to Visual Basic 2005 (.NET)
- v1.1 (2006-05-07) - First public release

Document last Revised: 2018-03-10 11:33:40 AM