

WinThesaurus

Welcome

WinThesaurus version 3.2.1 is a thesaurus (for finding synonyms: words of same or similar meaning) for Windows.

WinThesaurus can help when you are looking for a particular word but can only think of a similar word. Type the word you know into WinThesaurus (or find it in a list), click once, and you have a list of synonyms. You can select one and copy it to the Windows clipboard with two more clicks.

WinThesaurus has 30,260 root words and phrases, and over 2.5 million synonyms. That is an average of 83 synonyms per root.

WinThesaurus is Copyright © 2005-2017 by Ron Charlton. WinThesaurus may be distributed per its freeware [license](#).

Quick Start

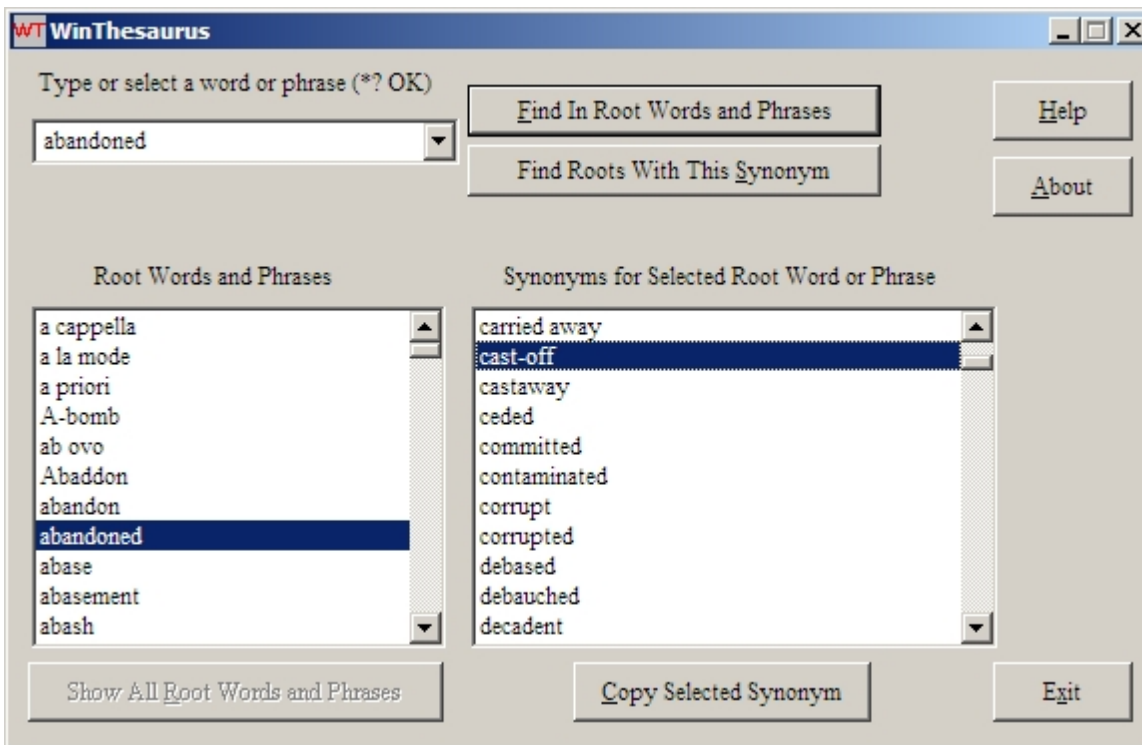


Figure 1

To start WinThesaurus, click Start»Programs»WinThesaurus»WinThesaurus. This assumes you accepted the default installation setup.

Scroll through the **Root Words and Phrases** list box at the left and click on a word or phrase. A list of synonyms will appear in the **Synonyms for Selected Root Word or Phrase** list box at the right. Click on a word or phrase in the synonyms list box. Click the **Copy Selected Synonym** button to copy it to the Windows clipboard. Then you can paste it into other Windows applications.

OR

Type a word or phrase in the text entry box at the upper left of the window. Click the **Find In Root Words and Phrases** button, or press the **Enter** key, or press the **Alt+F** keys. If your entry is among the root words and phrases, it will appear in the **Root Words and Phrases** list box. A list of synonyms will appear in the **Synonyms for Selected Root Word or Phrase** list box.

OR

Type a word or phrase and click the **Find Roots With This Synonym** button. You will see a list of roots that contain that word or phrase as a synonym. Click a root to see all of its synonyms.

Hint: You can double-click a word or phrase in either list box to transfer it to the text entry box, as if you had typed it.

Hint: [Wild cards](#) (* and ?) work in the text entry box.

Using WinThesaurus

TERMINOLOGY

WinThesaurus has 30,260 *root words and phrases*, or just *roots* for short, that organize its information. Each root has an average of 83 *synonyms*. A synonym is a word or phrase that has the same or similar meaning as the root.

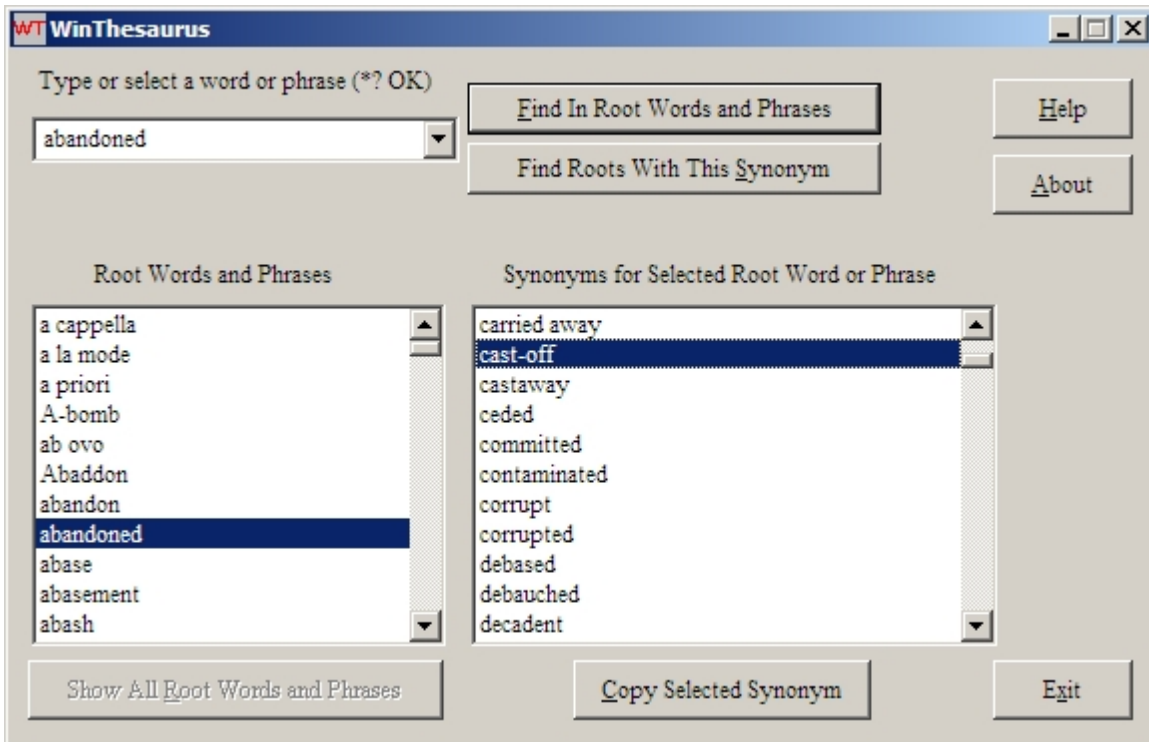


Figure 1

STARTING WINTHESAURUS

To start WinThesaurus, click Start»Programs»WinThesaurus»WinThesaurus. This assumes you accepted the default installation setup.

FINDING ROOT WORDS AND PHRASES

WinThesaurus has three ways of finding roots and thereby finding synonyms.

FIRST WAY OF FINDING ROOTS

The first way of finding roots is a scrolling list box (at the lower left corner of the WinThesaurus window, see Figure 2) that starts out with all 30,260 roots:

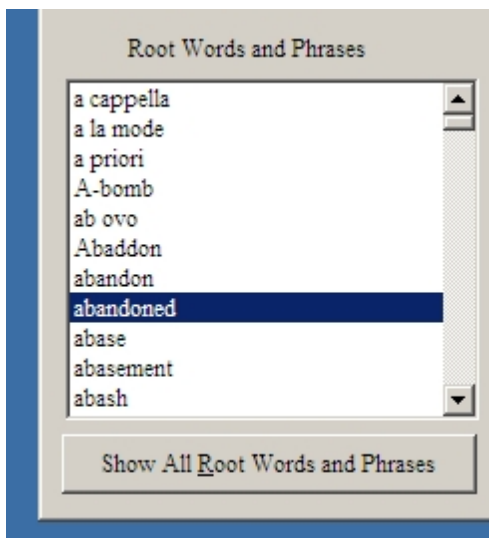


Figure 2

Scroll the list to find a particular root. Select the root by clicking it. A list of synonyms will appear in the synonyms list box to the right of the roots list box. You can also move around in the roots list with the *Home*, *End*, *Page Up* and *Page Down* keyboard keys. Type a letter (when the roots list box has focus) to move the list to the first root that begins with that letter.

The roots list is showing only some roots if the button below it is enabled. Click the button if you want to show all roots. (You will learn next how the list gets narrowed.)

SECOND WAY OF FINDING ROOTS

The second way of finding roots is with the text entry box (at the upper left corner of the WinThesaurus window) and the *top* button next to it (see Figure 3):

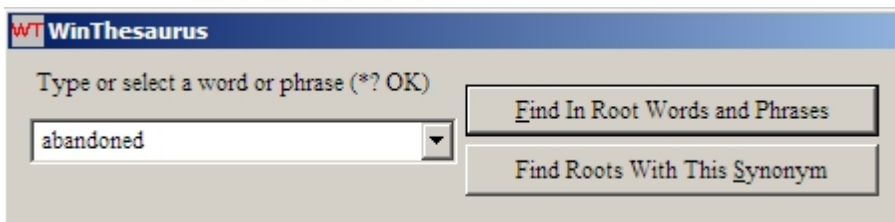


Figure 3

Type a word or phrase in the text entry box and click the *top* button next to it (or press the *Enter* key or *Alt+F* keys instead of clicking the button). If your word or phrase is among the roots, it will appear in the roots list box (see Figure 2, above) below the text entry box. The roots list box will be empty if your word or phrase is not found. If you used [wild cards](#) the roots list box may contain a few or many roots. Click on a root to see its synonyms in the synonyms list box.

Hint: You can double-click a word or phrase in either list box to transfer it to the text entry box, as if you had typed it.

THIRD WAY OF FINDING ROOTS

The third way finds all roots that have your word or phrase as a synonym. This is a kind of "reverse" lookup, where you find roots that match a WinThesaurus synonym. This is useful because about 73,000 unique synonyms in WinThesaurus do not appear as a root.

Use the text entry box and the *bottom* button next to it (see Figure 3, above). Type a word or phrase into the text entry box and click the *bottom* button next to it (or press the *Alt+S* key; the *Enter* key doesn't work here).

Hint: You can double-click a word or phrase in either list box to transfer it to the text entry box, as if you had typed it.

VIEWING AND COPYING SYNONYMS

In the right two-thirds of the WinThesaurus window is the synonym list box and synonym copy button (see Figure 4):

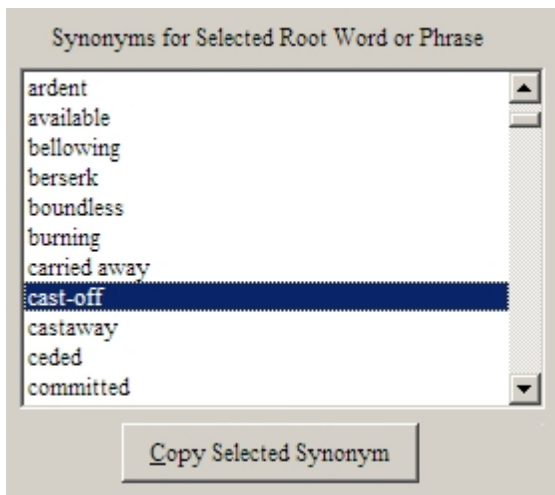


Figure 4

Click a root in the *roots* list box to see its synonyms in the synonyms list box. Scroll the synonyms list to find a particular synonym. You can also move around in the synonyms list with the *Home*, *End*, *Page Up* and *Page Down* keyboard keys. Type a letter (when the synonyms list box has focus) to move the list to the first synonym beginning with that letter.

Click a synonym to select it. The *Copy Selected Synonym* button will be enabled. Click the button to copy the selected synonym to the Windows clipboard. Then you can paste the synonym into other Windows applications.

Note: The *root* that you selected appears as the first item in the synonyms list box. This allows you to copy the selected root to the Windows clipboard.

WINTHESAURUS BUTTONS

WinThesaurus has seven buttons:

- **Find In Root Words and Phrases** - look among the 30,260 roots for those matching the text entry box contents
- **Find Roots With This Synonym** - find all of the roots having synonyms matching the text entry box contents
- **Show All Root Words and Phrases** - A reduced number of roots is shown when this button is enabled. Click it to show them all.
- **Help** - show this help information
- **About** - show version, author and copyright information
- **Copy Selected Synonym** - copy the selected synonym to the Windows clipboard
- **Exit** - close (end) WinThesaurus

WinThesaurus has no menu.

Wild Cards

Wild cards can substitute for characters in the text entry box. With wild cards you can find multiple roots or synonyms with one entry.

The two wild card characters are

- * substitutes for any number (including zero) of characters
- ? substitutes for exactly one character

You can use up to eight * in one search. You can use any number of ? in one search. You can mix * and ? in one search. An example of acceptable wild card use is *a*b?c*d*, which finds *abscond*, *absconded* and *ascorbic acid* among the roots. Wild cards work with both **Find In Root Words and Phrases** and **Find Roots With This Synonym** buttons.

Try *??tion* to find words that start with any two characters and end with *tion*. Try **tion* to find *all* words that end in *tion*. Also see [Interesting Searches](#) for more wild card examples.

Interesting Searches

WinThesaurus is an extensive lexicon. Here are some interesting things to find. Asterisks here are literal, not footnote references, and a dot represents a space. Search for

- **cut** as a root; It has 1,447 synonyms
- **pneumonou*** as a synonym; it has 45 letters
- ***.the.*** to find words and phrases containing the word *the* bracketed by spaces
- ***.*** to find phrases
- ***-*** to find hyphenated phrases
- **??tion** to find six-character words and phrases ending in *tion*
- ***tion** to find all words and phrases ending in *tion*
- **?** to see all one-character words and phrases
- **?????** to see all five-character words and phrases
- **good.*** to see phrases beginning with the word *good*
- **a*b?c*d** as a root to find three words and phrases

Uninstalling WinThesaurus

Be sure to close WinThesaurus and its help before uninstalling it so all WinThesaurus files can be removed from your computer.

You can uninstall WinThesaurus by using the *You Can Uninstall WinThesaurus* item in the WinThesaurus program group (Start»Programs»WinThesaurus»You Can Uninstall WinThesaurus). You can also use **Add or Remove Programs** in the Windows Control Panel.

License

WinThesaurus is copyright © 2005-2017 by Ron Charlton. You may freely distribute its unmodified setup file, WTSetup.exe. You shall not distribute WinThesaurus or any of its component files by any means other than its provided setup file.

You shall not charge anything other than a nominal media fee for distributing the WinThesaurus setup file.

Author

Ron Charlton
9002 BALCOR CIR
KNOXVILLE TN 37923-2301 USA

Phone: 865-776-7345

E-mail: charltoncr@RonCharlton.org

Web Site: <http://RonCharlton.org/>

Credits

- WinThesaurus uses the [Moby Thesaurus](#) (a free 24.8 MB text file thesaurus) by Grady Ward.
- The WinThesaurus data were compressed with lzma.exe (from [7Zip](#)'s LZMA SDK) (free) by Igor Pavlov.
- The WinThesaurus setup program was created with [Inno Setup](#) (free) by Jordan Russell.
- The WinThesaurus Inno Setup script was edited with [Inno Setup Studio](#) (free) by Kymoto Solutions.
- WinThesaurus was compiled with [Microsoft Visual Studio](#).
- WinThesaurus help was created with [HelpNDoc](#) (free for personal use).

History

- v3.2.1 (2017-06-30) - Fixes an egregious crashing when the first item in the left list box was clicked initially. Synonyms that match wild cards in the text entry box are marked in the Synonyms list box.
- v3.0 (2014-07-08) - Ported to Microsoft Visual C++ 2010 (10.0)
- v2.0 (2010-11-06) - Ported to Microsoft Visual C++ 2005 (8.0)
- v1.4 (2007-11-19) - Use LZMA (7Zip) compression (43% smaller installed size)
- v1.3 (2007-03-17) - Selecting a history drop-down item deleted the text entry
- v1.2 (2005-07-27) - Added history drop-down list to the text entry box
- v1.1 (2005-07-20) - First public release

Document last Revised: 2017-07-25 02:38:33 PM